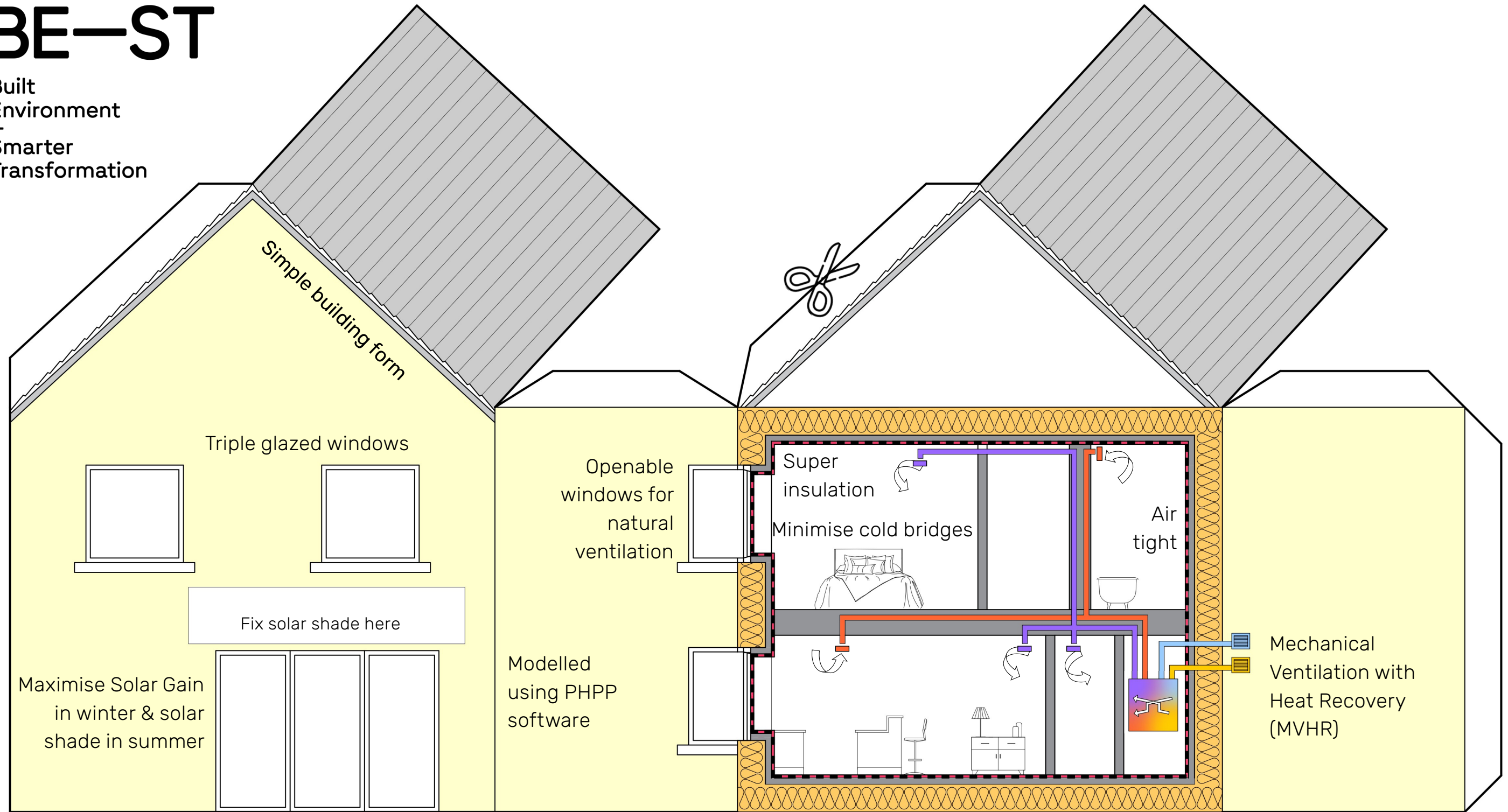


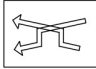


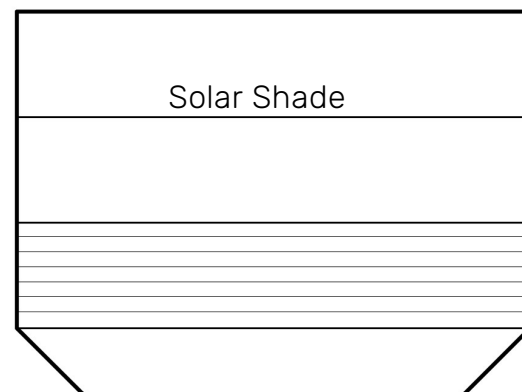
BE-ST

Built Environment
Smarter Transformation



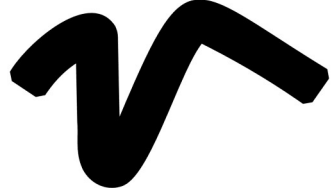
Passivhaus Principles

-  Continuous airtight layer
-  Super insulation
-  Mechanical ventilation with heat recovery (MVHR)
- Optimised solar gain & shading & Triple glazed windows
- Minimise thermal bridges



Passivhaus Principles House

BE-ST
Built Environment
Smarter Transformation



With thanks to
The Passivhaus Trust &
PAUL Heat Recovery
for expert advice.

